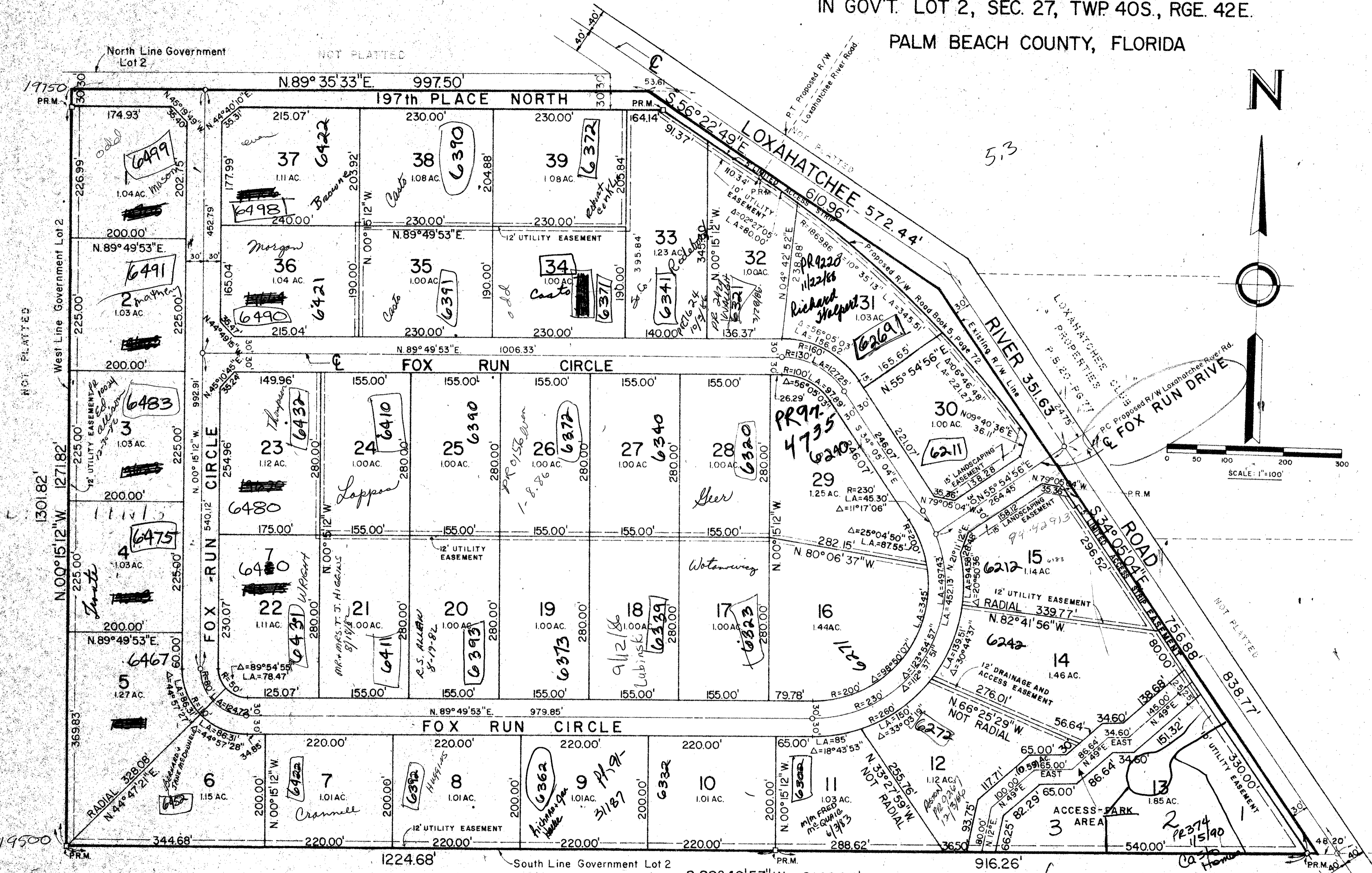


PLAT OF FOX RUN

IN GOV'T. LOT 2, SEC. 27, TWP 40S., RGE. 42E.
PALM BEACH COUNTY, FLORIDA



0245-000

215

See Replat of
Lot #13
Fox Run
3/90

Fox Run

27/40/42 32/77

NOTES
 All bearings refer to an assumed bearing of
 S89°49'53"W of South line of Government Lot 2.
 ○ = Denotes Permanent Control Point (P.C.P.)
 □ = Denotes Permanent Reference Monuments (P.R.M.)
 There shall be no buildings or structures placed on public utility easements.
 There shall be no buildings or the planting of trees or shrubs on drainage easements.

PLAT OF FOX RUN		
WILLIAM G. WALLACE, INC. Consulting Engineers & Land Surveyors U.S. Highway One, North Palm Beach, Florida		
FIELD: R.F.G.	JOB NO.: J-75-346	FILE NO. 27-40-42
OFFICE: J.B.F.	DATE: AUGUST 1975	DWG. NO.: 75-227
CK'D: K.S.	REF:	SHEET 2 OF 2